

Courtesy Of Nooran Ostadeian Of RE/MAX Elite

\$425,000 - 16210 86 Avenue, Edmonton

MLS® #E4429805

\$425,000

3 Bedroom, 2.00 Bathroom, 1,057 sqft
Single Family on 0.00 Acres

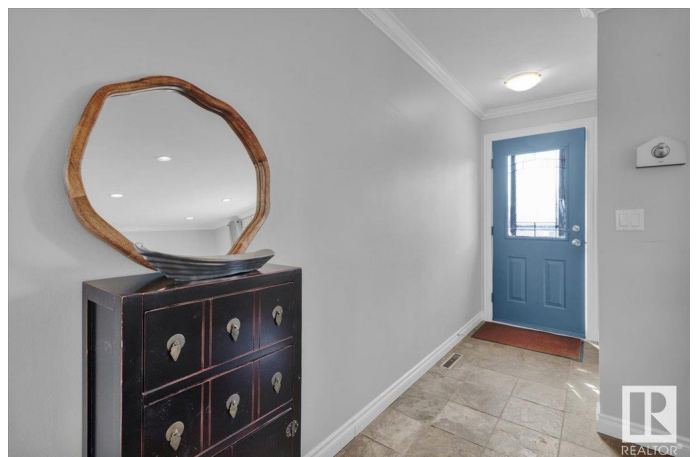
Elmwood, Edmonton, AB

Welcome to this beautifully upgraded character bungalow, ideally located in West Edmonton—just minutes from top-rated schools, WEM, a variety of shops & restaurants. Whether you're raising a family or looking for your forever home, this property offers comfort, functionality & lifestyle. The main floor features an open-concept layout with a chef's kitchen designed for both cooking & entertaining, complete with quality finishes & great flow. Enjoy the spacious primary suite, which combines two bedrooms into one, along with a second bedroom on the main level. Downstairs, discover the ultimate hangout space—featuring a cozy TV area, game room, stylish bar, wine cellar, additional bedroom & full bathroom—perfect for guests or extended family. Step outside to a large backyard with room for RV parking, extra cars, a hot tub & a covered patio. Yard is pre-wired for a 240V hot tub outlet. This home is move-in ready—an amazing opportunity combining comfort, value & a perfect location!

Built in 1964

Essential Information

| | |
|----------|-----------|
| MLS® # | E4429805 |
| Price | \$425,000 |
| Bedrooms | 3 |



| | |
|----------------|------------------------|
| Bathrooms | 2.00 |
| Full Baths | 2 |
| Square Footage | 1,057 |
| Acres | 0.00 |
| Year Built | 1964 |
| Type | Single Family |
| Sub-Type | Detached Single Family |
| Style | Bungalow |
| Status | Active |

Community Information

| | |
|-------------|-----------------|
| Address | 16210 86 Avenue |
| Area | Edmonton |
| Subdivision | Elmwood |
| City | Edmonton |
| County | ALBERTA |
| Province | AB |
| Postal Code | T5R 4C7 |

Amenities

| | |
|----------------|--|
| Amenities | Bar, Fire Pit, No Animal Home, No Smoking Home, Patio, Wet Bar |
| Parking Spaces | 4 |
| Parking | Single Garage Detached |

Interior

| | |
|--------------|---|
| Appliances | Dryer, Microwave Hood Fan, Refrigerator, Stove-Electric, Washer, Window Coverings, Dishwasher-Two |
| Heating | Forced Air-1, Natural Gas |
| Fireplace | Yes |
| Fireplaces | Corner |
| Stories | 2 |
| Has Basement | Yes |
| Basement | Full, Finished |

Exterior

| | |
|-------------------|--|
| Exterior | Wood, Vinyl |
| Exterior Features | Back Lane, Fenced, Low Maintenance Landscape, Park/Reserve, Playground Nearby, Public Transportation, Schools, Shopping Nearby |
| Roof | Asphalt Shingles |

| | |
|--------------|--------------------|
| Construction | Wood, Vinyl |
| Foundation | Concrete Perimeter |

School Information

| | |
|------------|------------------|
| Elementary | Patricia Heights |
| Middle | Hillcrest |
| High | Jasper Place |

Additional Information

| | |
|----------------|-----------------|
| Date Listed | April 9th, 2025 |
| Days on Market | 10 |
| Zoning | Zone 22 |

DATA IS DEEMED RELIABLE BUT IS NOT GUARANTEED ACCURATE BY THE REALTORS® ASSOCIATION OF EDMONTON. COPYRIGHT 2025 BY THE REALTORS® ASSOCIATION OF EDMONTON. ALL RIGHTS RESERVED. Trademarks are owned or controlled by the Canadian Real Estate Association (CREA) and identify real estate professionals who are members of CREA (REALTOR®, REALTORS®) and/or the quality of services they provide (MLS®, Multiple Listing Service®)

Listing information last updated on April 19th, 2025 at 5:17pm MDT