

\$500,000 - 30 Pineview Drive, St. Albert

MLS® #E4429025

\$500,000

3 Bedroom, 3.00 Bathroom, 1,222 sqft

Single Family on 0.00 Acres

Pineview, St. Albert, AB

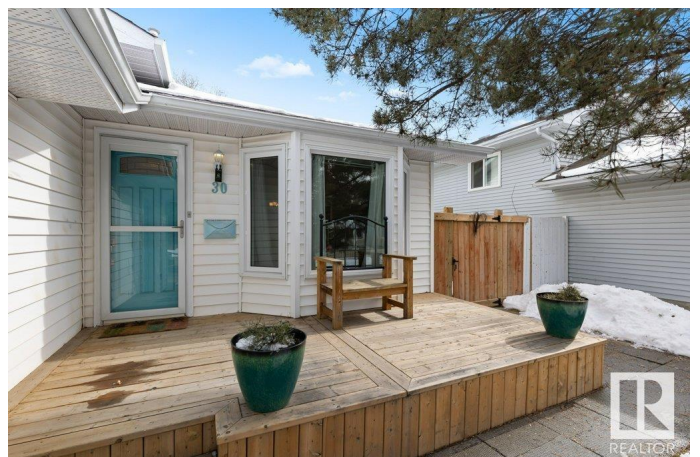
Perfect Family Home in Pineview! Welcome to this beautifully updated home in a family-friendly neighborhood, just steps from parks, walking trails, and open fields—perfect for kids to explore! With quick access to the Henday and all amenities, everything you need is close by. Inside, the bright main floor offers a spacious living and dining area, leading to a gorgeous custom-built kitchen with a pot filler and coffee bar—ideal for busy mornings. The third level features a cozy family room with a gas fireplace, a bedroom, laundry, and a 3pc bath. Upstairs, you™ll find two large bedrooms and two 4pc baths, including private ensuite. The finished basement is perfect for movie nights or playroom, with tons of storage. This home has central A/C, energy-efficient vinyl windows, and a brand-new furnace for year-round comfort. The insulated double attached garage keeps your vehicles warm in winter. Enjoy summer evenings in your south-facing backyard with mature trees—ideal for family barbecues and outdoor fun!

Built in 1988

Essential Information

MLS® # E4429025

Price \$500,000



Bedrooms	3
Bathrooms	3.00
Full Baths	3
Square Footage	1,222
Acres	0.00
Year Built	1988
Type	Single Family
Sub-Type	Detached Single Family
Style	4 Level Split
Status	Active

Community Information

Address	30 Pineview Drive
Area	St. Albert
Subdivision	Pineview
City	St. Albert
County	ALBERTA
Province	AB
Postal Code	T8N 4S9

Amenities

Amenities	Air Conditioner, Deck
Parking	Double Garage Attached

Interior

Interior Features	ensuite bathroom
Appliances	Air Conditioning-Central, Dishwasher-Built-In, Dryer, Garage Control, Garage Opener, Microwave Hood Fan, Refrigerator, Stove-Electric, Washer, Window Coverings
Heating	Forced Air-1, Natural Gas
Fireplace	Yes
Fireplaces	Stone Facing
Stories	4
Has Basement	Yes
Basement	Full, Finished

Exterior

Exterior	Wood, Vinyl
Exterior Features	Fenced, Landscaped, Park/Reserve, Playground Nearby, Schools,

	Shopping Nearby
Roof	Asphalt Shingles
Construction	Wood, Vinyl
Foundation	Concrete Perimeter

Additional Information

Date Listed	April 4th, 2025
Days on Market	1
Zoning	Zone 24

DATA IS DEEMED RELIABLE BUT IS NOT GUARANTEED ACCURATE BY THE REALTORS® ASSOCIATION OF EDMONTON. COPYRIGHT 2025 BY THE REALTORS® ASSOCIATION OF EDMONTON. ALL RIGHTS RESERVED. Trademarks are owned or controlled by the Canadian Real Estate Association (CREA) and identify real estate professionals who are members of CREA (REALTOR®, REALTORS®) and/or the quality of services they provide (MLS®, Multiple Listing Service®)

Listing information last updated on April 5th, 2025 at 1:32am MDT