

\$579,900 - 11 Ethan Place, St. Albert

MLS® #E4427951

\$579,900

5 Bedroom, 3.50 Bathroom, 2,050 sqft
Single Family on 0.00 Acres

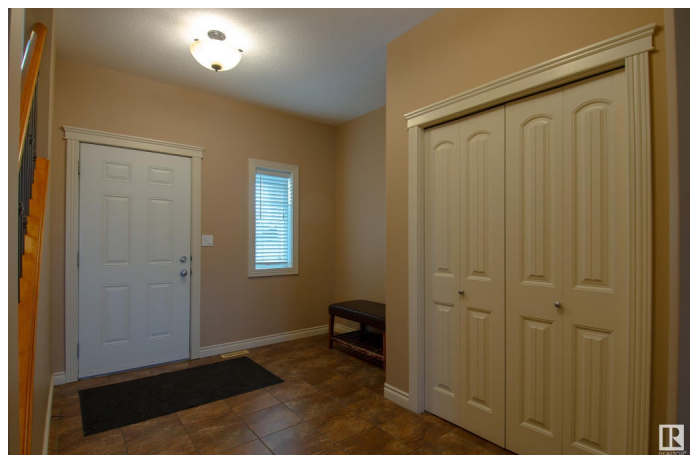
Erin Ridge, St. Albert, AB

Tucked into a quiet cul-de-sac, this spacious two-storey offers a thoughtful layout with four bedrooms upstairs and a fully finished basement with a fifth bedroom. The main floor features rich hardwood floors, 9ft high ceilings, and a cozy gas fireplace in the living area. The kitchen is designed for both function and style, with maple cabinetry, granite countertops, stainless steel appliances—including a gas stove—and a walk-in pantry. A bright and airy bonus room on the second floor sits alongside four generously sized bedrooms, while the primary suite includes a five-piece ensuite and walk-in closet. The basement provides additional living space with a large rec room, a fifth bedroom, a full bath, and rough-ins for a second kitchen and a second laundry room next to the furnace. A long driveway, insulated garage, and landscaped yard with a large deck complete the home. Located near schools, shopping, trails, and the Sturgeon Hospital, this is a well-connected yet peaceful place to call home.

Built in 2006

Essential Information

MLS® #	E4427951
Price	\$579,900
Bedrooms	5



Bathrooms	3.50
Full Baths	3
Half Baths	1
Square Footage	2,050
Acres	0.00
Year Built	2006
Type	Single Family
Sub-Type	Detached Single Family
Style	2 Storey
Status	Active

Community Information

Address	11 Ethan Place
Area	St. Albert
Subdivision	Erin Ridge
City	St. Albert
County	ALBERTA
Province	AB
Postal Code	T8N 7L6

Amenities

Amenities	Ceiling 9 ft.
Parking Spaces	4
Parking	Double Garage Attached

Interior

Interior Features	ensuite bathroom
Appliances	Dishwasher-Built-In, Dryer, Microwave Hood Fan, Refrigerator, Stove-Gas, Washer
Heating	Forced Air-1, Natural Gas
Fireplace	Yes
Fireplaces	Mantel, Stone Facing
Stories	3
Has Basement	Yes
Basement	Full, Finished

Exterior

Exterior	Wood, Vinyl
Exterior Features	Fenced, Flat Site, Schools, Shopping Nearby

Roof	Asphalt Shingles
Construction	Wood, Vinyl
Foundation	Concrete Perimeter

Additional Information

Date Listed	March 28th, 2025
-------------	------------------

Days on Market	8
----------------	---

Zoning	Zone 24
--------	---------

DATA IS DEEMED RELIABLE BUT IS NOT GUARANTEED ACCURATE BY THE REALTORS® ASSOCIATION OF EDMONTON. COPYRIGHT 2025 BY THE REALTORS® ASSOCIATION OF EDMONTON. ALL RIGHTS RESERVED. Trademarks are owned or controlled by the Canadian Real Estate Association (CREA) and identify real estate professionals who are members of CREA (REALTOR®, REALTORS®) and/or the quality of services they provide (MLS®, Multiple Listing Service®)

Listing information last updated on April 5th, 2025 at 6:32am MDT