

## **\$379,900 - 6 1237 Carter Crest Road, Edmonton**

MLS® #E4425147

**\$379,900**

2 Bedroom, 2.50 Bathroom, 1,668 sqft  
Condo / Townhouse on 0.00 Acres

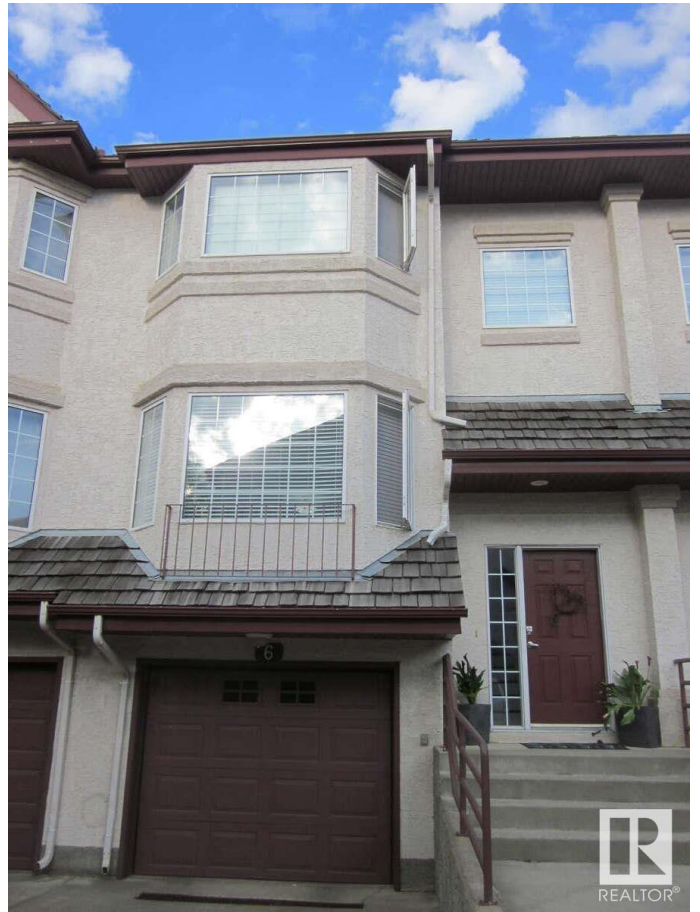
Carter Crest, Edmonton, AB

For more information, please click on "View Listing on Realtor Website". Two master bedrooms upstairs with own ensuites and walk-in closets with 3rd bedroom/den in lower walk-out. Laundry area upstairs near bedrooms. Main floor consists of living room, separate dining room, bathroom, kitchen with dining area to outside deck overlooking own backyard. The walkout consists of double tandem garage with den a/o small bedroom with outside entry to your own private concrete patio BBQ area and grass. Snow shoveling, lawn and exterior maintenance of building are done by the condo association. Pets are accepted by the condo board. This home is located in prestigious Riverbend community of Whitemud Hills area. It is close to all major entry points of Terwillegar Drive, Anthony Henday, Whitemud Drive with quick access to airport and major shopping, parks, recreation within minutes. An upscale, convenient, safe and peaceful community choice!

Built in 1998

### **Essential Information**

MLS® #	E4425147
Price	\$379,900
Bedrooms	2
Bathrooms	2.50



Full Baths	2
Half Baths	1
Square Footage	1,668
Acres	0.00
Year Built	1998
Type	Condo / Townhouse
Sub-Type	Townhouse
Style	3 Level Split
Status	Active

### Community Information

Address	6 1237 Carter Crest Road
Area	Edmonton
Subdivision	Carter Crest
City	Edmonton
County	ALBERTA
Province	AB
Postal Code	T6R 2L6

### Amenities

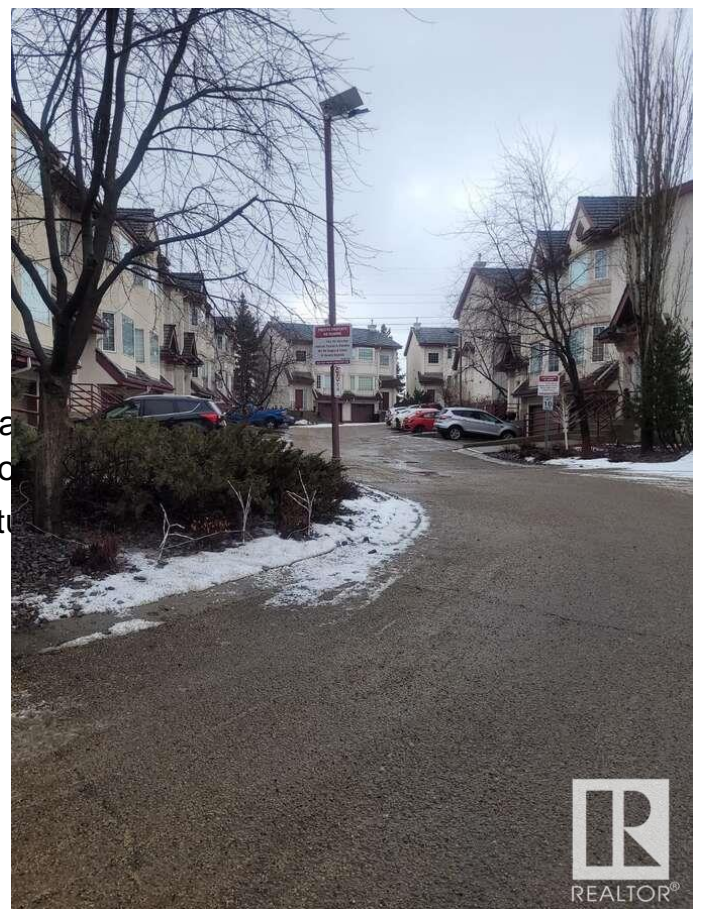
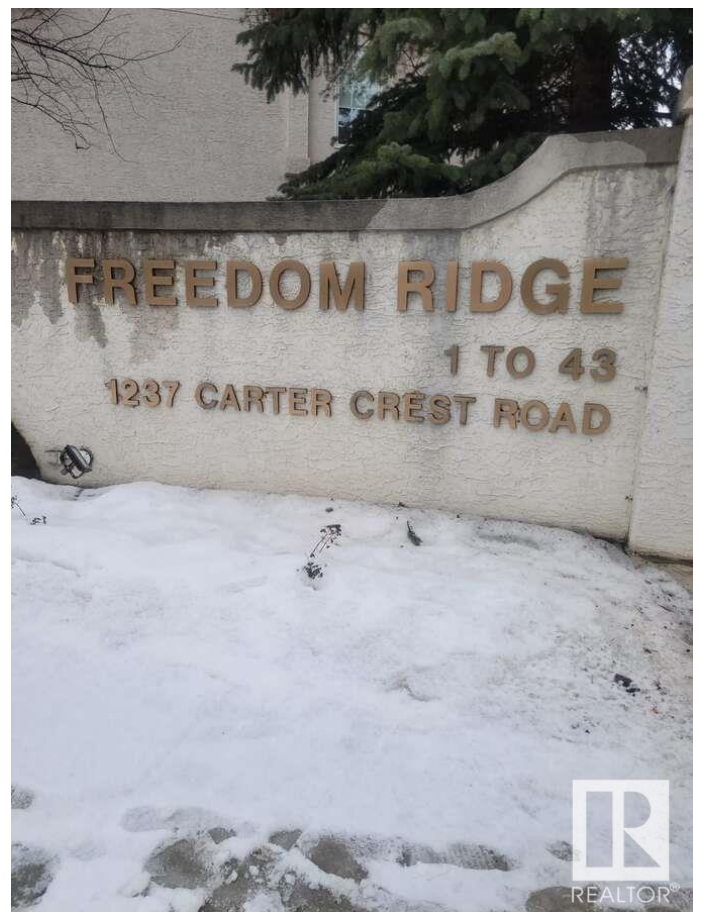
Amenities	Deck, Dugout Basement
Parking Spaces	3
Parking	Tandem

### Interior

Interior Features	ensuite bathroom
Appliances	Dishwasher - Energy Star, Oven-Microwave, Refrigerator
Heating	Forced Air-1, Hot Water, Natural Gas
Fireplace	Yes
Fireplaces	Brass Surround
Stories	3
Has Basement	Yes
Basement	None, No Basement

### Exterior

Exterior	Wood, Stucco
Exterior Features	Cul-De-Sac, Fenced, Gated Community, Golf Nearby, Landscaped, No Back Lane, Park/Reserve, Picnic Area, Playground Nearby, Public



Swimming Pool, Public Transportation, Schools, Shopping Nearby, Ski Hill Nearby, Treed Lot

Roof Cedar Shakes  
Construction Wood, Stucco  
Foundation Concrete Perimeter

### **School Information**

Elementary Earl Buxton

### **Additional Information**

Date Listed March 11th, 2025  
Days on Market 25  
Zoning Zone 14  
HOA Fees 210  
HOA Fees Freq. Annually  
Condo Fee \$410

DATA IS DEEMED RELIABLE BUT IS NOT GUARANTEED ACCURATE BY THE REALTORS® ASSOCIATION OF EDMONTON. COPYRIGHT 2025 BY THE REALTORS® ASSOCIATION OF EDMONTON. ALL RIGHTS RESERVED. Trademarks are owned or controlled by the Canadian Real Estate Association (CREA) and identify real estate professionals who are members of CREA (REALTOR®, REALTORS®) and/or the quality of services they provide (MLS®, Multiple Listing Service®)

Listing information last updated on April 5th, 2025 at 3:32pm MDT