

Courtesy Of Rachel S Fung Of MaxWell Polaris

# \$147,000 - 211 11217 103 Avenue, Edmonton

MLS® #E4423962

**\$147,000**

1 Bedroom, 1.00 Bathroom, 781 sqft  
Condo / Townhouse on 0.00 Acres

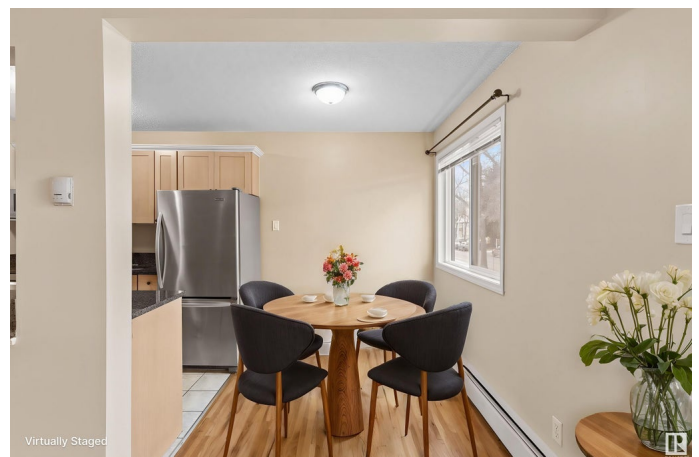
W&hkw&ant&win, Edmonton, AB

Fantastic corner walk-up unit in the heart of Oliver, steps from MacEwan University, Rogers Place, and the heart of Downtown Edmonton. This bright and spacious condo features gleaming hardwood floors, a modern open-concept kitchen with natural stone counter-tops, ample cabinet space, and new stainless steel appliances. The king-sized primary bedroom boasts a walk-in closet, with a 4-piece bathroom nearby. Enjoy in-suite laundry with extra storage and a large private balcony overlooking a quiet tree-lined street with sunset views. Unbeatable Walk Score&€”minutes from the Brewery District, future LRT, shopping, restaurants, bike lanes, parks, and the river valley. A perfect rental investment, first home, or downsizing opportunity in a well-maintained building!

Built in 1978

## Essential Information

MLS® #	E4423962
Price	\$147,000
Bedrooms	1
Bathrooms	1.00
Full Baths	1
Square Footage	781
Acres	0.00
Year Built	1978



Type	Condo / Townhouse
Sub-Type	Lowrise Apartment
Style	Single Level Apartment
Status	Active

### Community Information

Address	211 11217 103 Avenue
Area	Edmonton
Subdivision	W&#x26;#x2013;hkw&#x2013;ant&#x2013;win
City	Edmonton
County	ALBERTA
Province	AB
Postal Code	T5K 2V9

### Amenities

Amenities	See Remarks
Parking	Stall

### Interior

Appliances	Dishwasher-Built-In, Dryer, Refrigerator, Stove-Electric, Washer, Window Coverings
Heating	Hot Water, Natural Gas
# of Stories	3
Stories	1
Has Basement	Yes
Basement	None, No Basement

### Exterior

Exterior	Wood, Stucco
Exterior Features	See Remarks
Roof	Tar & Gravel
Construction	Wood, Stucco
Foundation	Concrete Perimeter

### Additional Information

Date Listed	March 5th, 2025
Days on Market	38
Zoning	Zone 12
Condo Fee	\$452

DATA IS DEEMED RELIABLE BUT IS NOT GUARANTEED ACCURATE BY THE REALTORS® ASSOCIATION OF EDMONTON. COPYRIGHT 2025 BY THE REALTORS® ASSOCIATION OF EDMONTON. ALL RIGHTS RESERVED. Trademarks are owned or controlled by the Canadian Real Estate Association (CREA) and identify real estate professionals who are members of CREA (REALTOR®, REALTORS®) and/or the quality of services they provide (MLS®, Multiple Listing Service®)

Listing information last updated on April 12th, 2025 at 2:32am MDT