

\$209,900 - 216 12550 140 Avenue, Edmonton

MLS® #E4423899

\$209,900

2 Bedroom, 2.00 Bathroom, 840 sqft
Condo / Townhouse on 0.00 Acres

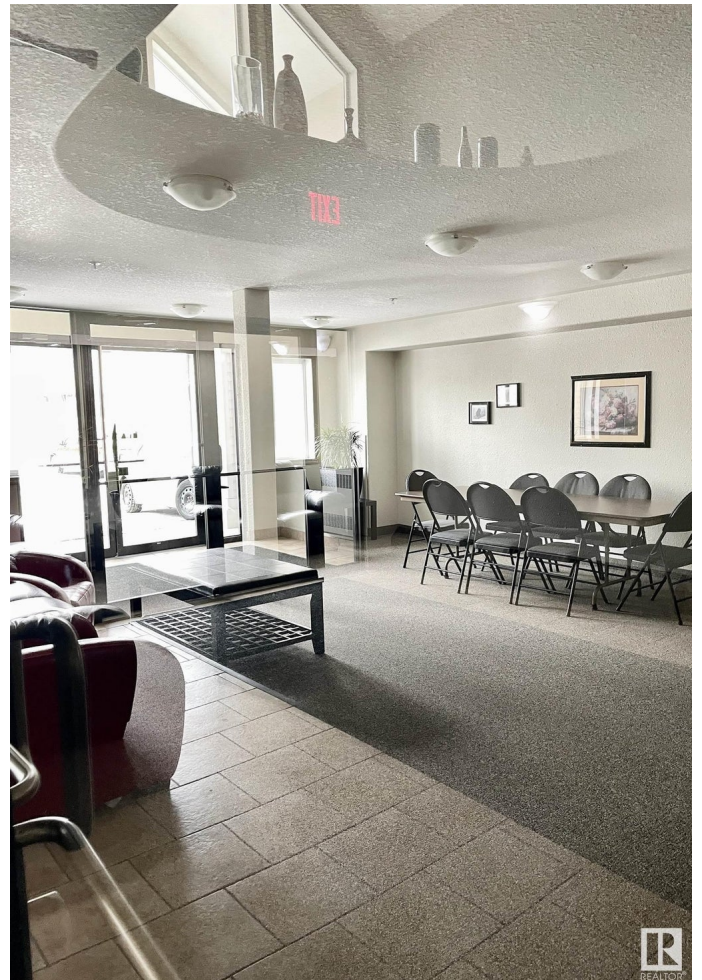
Baranow, Edmonton, AB

Remarkable 2 bedroom condo with 2 full bathrooms and heated underground parking, in a very well kept complex. The kitchen has an island, glass tile backsplash appliances are now black and the over the range microwave is stainless steal, there are lots of cupboards, and is open to the dining area. The bright living room has a/c and sliding door that goes out to the south facing sunny balcony. Two spacious bedrooms, primary bedroom has a walk-thru closet to the 4 piece ensuite. Loads of storage in this unit plus in suite laundry. Walking distance to all amenities and easy access to Yellowhead and Anthony Henday!

Built in 2004

Essential Information

MLS® #	E4423899
Price	\$209,900
Bedrooms	2
Bathrooms	2.00
Full Baths	2
Square Footage	840
Acres	0.00
Year Built	2004
Type	Condo / Townhouse
Sub-Type	Lowrise Apartment
Style	Single Level Apartment



Status Active

Community Information

Address 216 12550 140 Avenue

Area Edmonton

Subdivision Baranow

City Edmonton

County ALBERTA

Province AB

Postal Code T5X 6J4

Amenities

Amenities Intercom, Parking-Visitor, Secured Parking, Security Door, Social Rooms, Sprinkler System-Fire, Storage-In-Suite

Parking Spaces 1

Parking Parkade, Underground

Interior

Interior Features ensuite bathroom

Appliances Dishwasher-Built-In, Fan-Ceiling, Garage Control, Microwave Hood Fan, Refrigerator, Stacked Washer/Dryer, Stove-Electric, See Remarks

Heating Baseboard, Hot Water, Natural Gas

of Stories 4

Stories 1

Has Basement Yes

Basement None, No Basement

Exterior

Exterior Wood, Vinyl

Exterior Features Public Transportation, Schools, Shopping Nearby

Roof Asphalt Shingles

Construction Wood, Vinyl

Foundation Concrete Perimeter

Additional Information

Date Listed March 3rd, 2025

Days on Market 33

Zoning Zone 27

Condo Fee \$555

DATA IS DEEMED RELIABLE BUT IS NOT GUARANTEED ACCURATE BY THE REALTORS® ASSOCIATION OF EDMONTON. COPYRIGHT 2025 BY THE REALTORS® ASSOCIATION OF EDMONTON. ALL RIGHTS RESERVED. Trademarks are owned or controlled by the Canadian Real Estate Association (CREA) and identify real estate professionals who are members of CREA (REALTOR®, REALTORS®) and/or the quality of services they provide (MLS®, Multiple Listing Service®)

Listing information last updated on April 5th, 2025 at 11:32am MDT