

\$899,900 - 6645 Knox Place, Edmonton

MLS® #E4422662

\$899,900

3 Bedroom, 2.50 Bathroom, 2,426 sqft
Single Family on 0.00 Acres

Keswick Area, Edmonton, AB

Welcome to this stunning 2,400+ sq. ft. home backing onto beautiful green space and scenic trails. Designed with extra-large windows, this home is filled with natural light, enhancing the open-concept layout and soaring vaulted ceilings. The open riser staircase adds a modern touch, while 9â€™™ ceilings on the second floor create an airy feel. The main floor offers a seamless flow between the kitchen, dining, and living areas, perfect for entertaining. Upstairs, the Jack & Jill bathroom connects two spacious bedrooms, while the primary suite provides a private retreat. The triple attached garage is oversized with a garage drain for added convenience. A finished basement staircase offers future development potential, and the expansive deck is ideal for relaxing. With a larger-than-average garage, open-concept living, and premium finishes, this home blends elegance and functionality. Donâ€™™t miss your chance to own this exceptional property!

Built in 2025

Essential Information

MLS® #	E4422662
Price	\$899,900
Bedrooms	3
Bathrooms	2.50

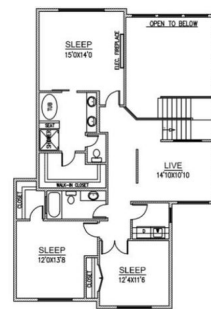


Mirage II - Prairie Modern

House Width	36'
Style	Two Storey
Bedrooms	3
Bathrooms	2.5



Main



Upper

Floor plans, specifications and dimensions shown are approximate and subject to change without notice.

Full Baths	2
Half Baths	1
Square Footage	2,426
Acres	0.00
Year Built	2025
Type	Single Family
Sub-Type	Detached Single Family
Style	2 Storey
Status	Active

Community Information

Address	6645 Knox Place
Area	Edmonton
Subdivision	Keswick Area
City	Edmonton
County	ALBERTA
Province	AB
Postal Code	T6W 4A1

Amenities

Amenities	Ceiling 9 ft., Closet Organizers, Deck, Hot Water Natural Gas
Parking	Triple Garage Attached

Interior

Interior Features	ensuite bathroom
Appliances	See Remarks
Heating	Forced Air-1, Natural Gas
Stories	2
Has Basement	Yes
Basement	Full, Unfinished

Exterior

Exterior	Wood, Brick, Vinyl
Exterior Features	Golf Nearby, Schools, Shopping Nearby
Roof	Asphalt Shingles
Construction	Wood, Brick, Vinyl
Foundation	Concrete Perimeter

Additional Information

Date Listed February 24th, 2025
Days on Market 40
Zoning Zone 56



DATA IS DEEMED RELIABLE BUT IS NOT GUARANTEED ACCURATE BY THE REALTORS[®] ASSOCIATION OF EDMONTON. COPYRIGHT 2025 BY THE REALTORS[®] ASSOCIATION OF EDMONTON. ALL RIGHTS RESERVED. Trademarks are owned or controlled by the Canadian Real Estate Association (CREA) and identify real estate professionals who are members of CREA (REALTOR[®], REALTORS[®]) and/or the quality of services they provide (MLS[®], Multiple Listing Service[®])

Listing information last updated on April 5th, 2025 at 7:02am MDT