

Courtesy Of Moe Ahmad and Hassan Haymour Of Sable Realty

# \$759,900 - 2532 210 Street, Edmonton

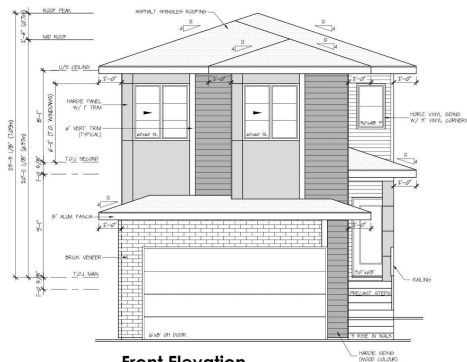
MLS® #E4420460

**\$759,900**

6 Bedroom, 4.00 Bathroom, 2,245 sqft  
Single Family on 0.00 Acres

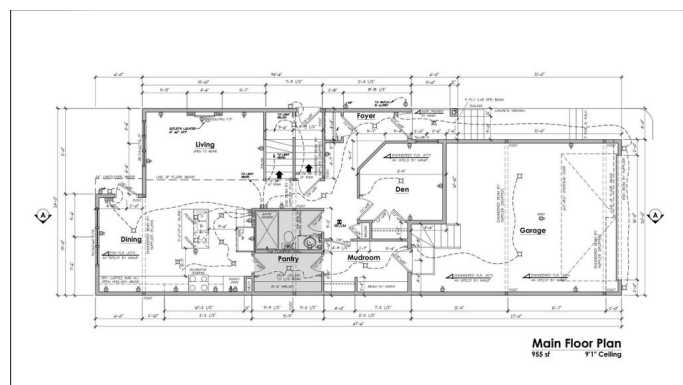
The Uplands, Edmonton, AB

Welcome to your dream home. Discover modern living in this beautifully designed home in the vibrant Uplands community! This thoughtfully designed property offers over 3000 sqft of living space, featuring 7 Bedrooms and 4 full bathrooms perfect for growing families. The main floor features a spacious bedroom with a full bath, an open-concept living room with soaring open-to-below ceilings, and a chef-inspired kitchen. Upstairs, you will find 4 generously sized bedrooms, including the primary suite with an inspired ensuite, a bonus room, and the convenience of second-floor laundry. The fully finished 2-bedroom LEGAL SUITE in the BASEMENT provides an excellent opportunity for rental income or extended family living, complete with its own private separate entrance. Located close to all amenities, schools, and shopping with quick access to the Anthony Henday. Anticipated completion date is April 2025.

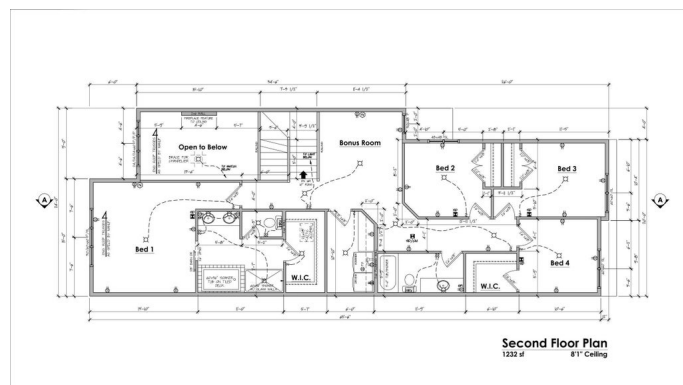


Front Elevation

Brick: 82 sf



Main Floor Plan  
955 sf  
8'1" Ceiling



Second Floor Plan  
1232 sf  
8'1" Ceiling

Built in 2024

## Essential Information

|           |           |
|-----------|-----------|
| MLS® #    | E4420460  |
| Price     | \$759,900 |
| Bedrooms  | 6         |
| Bathrooms | 4.00      |

|                |                        |
|----------------|------------------------|
| Full Baths     | 4                      |
| Square Footage | 2,245                  |
| Acres          | 0.00                   |
| Year Built     | 2024                   |
| Type           | Single Family          |
| Sub-Type       | Detached Single Family |
| Style          | 2 Storey               |
| Status         | Active                 |

### **Community Information**

|             |                 |
|-------------|-----------------|
| Address     | 2532 210 Street |
| Area        | Edmonton        |
| Subdivision | The Uplands     |
| City        | Edmonton        |
| County      | ALBERTA         |
| Province    | AB              |
| Postal Code | T6M 2M7         |

### **Amenities**

|           |                        |
|-----------|------------------------|
| Amenities | See Remarks            |
| Parking   | Double Garage Attached |

### **Interior**

|                   |                           |
|-------------------|---------------------------|
| Interior Features | ensuite bathroom          |
| Appliances        | See Remarks               |
| Heating           | Forced Air-1, Natural Gas |
| Fireplace         | Yes                       |
| Fireplaces        | Insert                    |
| Stories           | 3                         |
| Has Basement      | Yes                       |
| Basement          | Full, Finished            |

### **Exterior**

|                   |                    |
|-------------------|--------------------|
| Exterior          | Wood, Stone, Vinyl |
| Exterior Features | See Remarks        |
| Roof              | Asphalt Shingles   |
| Construction      | Wood, Stone, Vinyl |
| Foundation        | Concrete Perimeter |

### **Additional Information**

Date Listed February 6th, 2025

Days on Market 59

Zoning Zone 57

DATA IS DEEMED RELIABLE BUT IS NOT GUARANTEED ACCURATE BY THE REALTORS® ASSOCIATION OF EDMONTON. COPYRIGHT 2025 BY THE REALTORS® ASSOCIATION OF EDMONTON. ALL RIGHTS RESERVED. Trademarks are owned or controlled by the Canadian Real Estate Association (CREA) and identify real estate professionals who are members of CREA (REALTOR®, REALTORS®) and/or the quality of services they provide (MLS®, Multiple Listing Service®)

Listing information last updated on April 6th, 2025 at 10:02am MDT