

\$479,900 - 1 1243 Keswick Drive, Edmonton

MLS® #E4416310

\$479,900

3 Bedroom, 2.50 Bathroom, 1,173 sqft

Single Family on 0.00 Acres

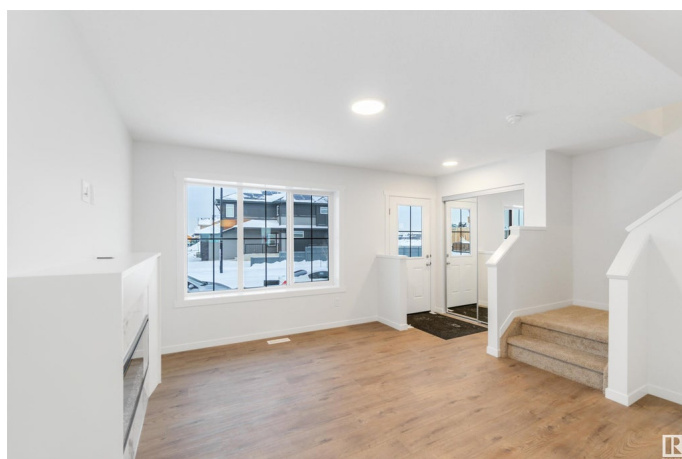
Keswick Area, Edmonton, AB

This beautiful, brand-new property is located in Edmonton's sought-after southwest Keswick community. Spanning 1,173 sqft of developed living space and featuring a double detached garage, this home is an excellent option for young families or couples. The main floor is designed with upgraded luxury laminate and vinyl plank flooring throughout the great room and kitchen. The kitchen showcases upgraded cabinets, countertops, and a stylish tile backsplash. A 2-piece bathroom completes the main level. Upstairs, you'll find the primary suite with a walk-in closet and ensuite, along with 2 additional bedrooms and a full bathroom—making this home perfect for first-time buyers. It's close to the Anthony Henday, amenities, the airport, and a beautiful community. All this home needs is you!

Built in 2024

Essential Information

MLS® #	E4416310
Price	\$479,900
Bedrooms	3
Bathrooms	2.50
Full Baths	2
Half Baths	1
Square Footage	1,173
Acres	0.00



Year Built	2024
Type	Single Family
Sub-Type	Residential Attached
Style	2 Storey
Status	Active

Community Information

Address	1 1243 Keswick Drive
Area	Edmonton
Subdivision	Keswick Area
City	Edmonton
County	ALBERTA
Province	AB
Postal Code	T6W 5P2

Amenities

Amenities	On Street Parking, Detectors Smoke, No Animal Home, No Smoking Home, Smart/Program. Thermostat
Parking	Double Garage Detached

Interior

Interior Features	ensuite bathroom
Appliances	Dishwasher-Built-In, Dryer, Garage Control, Garage Opener, Oven-Microwave, Refrigerator, Stove-Electric, Washer
Heating	Forced Air-1, Natural Gas
Stories	2
Has Basement	Yes
Basement	Full, Unfinished

Exterior

Exterior	Wood, Stone, Vinyl
Exterior Features	Airport Nearby, Golf Nearby, Landscaped, Playground Nearby, Public Transportation, Schools, Shopping Nearby
Roof	Asphalt Shingles
Construction	Wood, Stone, Vinyl
Foundation	Concrete Perimeter

School Information

Elementary	Constable Daniel Woodall
Middle	Joey Moss School

High Harry Ainlay School

Additional Information

Date Listed December 18th, 2024

Days on Market 108

Zoning Zone 56

DATA IS DEEMED RELIABLE BUT IS NOT GUARANTEED ACCURATE BY THE REALTORS® ASSOCIATION OF EDMONTON. COPYRIGHT 2025 BY THE REALTORS® ASSOCIATION OF EDMONTON. ALL RIGHTS RESERVED. Trademarks are owned or controlled by the Canadian Real Estate Association (CREA) and identify real estate professionals who are members of CREA (REALTOR®, REALTORS®) and/or the quality of services they provide (MLS®, Multiple Listing Service®)

Listing information last updated on April 5th, 2025 at 9:17am MDT